

Pediatric Emergency Medicine and Critical Care Medicine: *Bedside Ultrasound Course*

**Saturday, May 30 and
Sunday, May 31, 2015**



Ruth and Tristram Colket, Jr.
Translational Research
Building
*at The Children's
Hospital of Philadelphia*

www.chop.edu/cme

 The Children's Hospital of Philadelphia®
Hope lives here.®

Course Information

Course Overview

This course is intended as an alternative to adult emergency and critical care ultrasound courses, with a focus on pediatric emergency ultrasound indications. It is designed for both pediatric emergency medicine and critical care medicine providers with limited or basic knowledge of emergency bedside ultrasound. Through a combination of lectures and hands-on practical sessions using live pediatric models and simulation equipment, course attendees will learn ultrasound fundamentals (physics and principles of scanning) and ultrasound scanning techniques pertinent to pediatric practice, including: basic procedural guidance (line placement, lumbar puncture, etc.); evaluation of abscesses and foreign bodies; bladder scanning; FAST (focused assessment with sonography for trauma); lung evaluation; basic cardiac evaluation; musculoskeletal applications (fracture and joint); bowel scanning (intussusception); fluid and function evaluation; and advanced procedures (nerve blocks, chest tube placement, peritoneal/pleural fluid drainage).

The course is being taught by emergency and critical care ultrasound experts, and will have a low student-to-teacher ratio of 4 to 1. A limited portion of the course will be devoted to a knowledge and skills assessment exam and a brief discussion of program development and administrative issues with regard to point-of-care ultrasound.

General Information

The conference will be held at The Children's Hospital of Philadelphia in the Colket Research Building May 30 – 31, 2015. The registration fee includes continental breakfast, refreshments, lunch, parking and course materials.

Target Audience

Pediatric emergency medicine and critical care medicine providers.

Course Objectives

1. Demonstrate core nonprocedural ultrasound skills (basic fluid and cardiac function assessment, FAST exam, pulmonary ultrasounds) using bedside ultrasound
2. Demonstrate core procedural ultrasound skills (intravenous line insertion and fluid drainage)
3. Discuss appropriate indications and limitations of the bedside ultrasound exam in pediatric acute care settings

Accreditation Statement

The Children's Hospital of Philadelphia is accredited by the Accreditation Council for Continuing Medical Education (ACCME) to provide continuing medical education for physicians.

AMA Credit Designation Statement

The Children's Hospital of Philadelphia designates this live activity for a maximum of *15.25 AMA PRA Category 1 Credit(s)*[™].

Cancellation and Refund Policy

The Children's Hospital of Philadelphia reserves the right to cancel or postpone any course due to any unforeseen circumstances. In the event of cancellation or postponement, the Hospital will refund registration fees, less a \$40 service fee, but is not responsible for any related costs, charges or expenses to participants, including cancellation charges assessed by airlines or travel agencies. In order to process refunds, cancellations must be received in writing by Friday, May 15, 2015. No refunds will be issued thereafter.

Services for People with Disabilities

If special arrangements are required for an individual with a disability to attend this meeting, please contact the Continuing Medical Education Department at 215-590-5263.

Hotel

A block of rooms with reduced rates has been reserved at the Hilton Inn at Penn located just a few blocks from Children's Hospital. The group overnight rate is \$169 single and double occupancy plus room taxes. Participants are required to make their own hotel reservations by calling the Hilton Inn directly at 215-222-0200. Please mention the name of the conference when making your reservation. The special room rate will be available until Wednesday, April 29. After that date, reservations will be accepted on a space and rate availability basis.

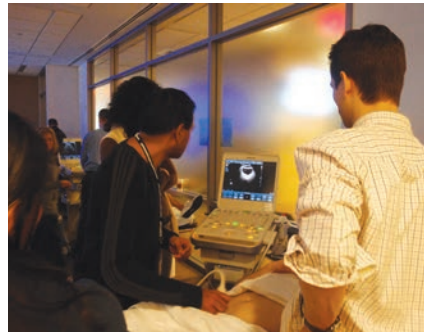
Program • Saturday, May 30, 2015

- 7:15 a.m. **Registration and Continental Breakfast**
- 7:45 a.m. **Welcome and Course Overview**
Aaron Chen, M.D., F.A.C.E.P., Akira Nishisaki, M.D., M.S.C.E., F.A.A.P.
- 8 a.m. **Physics and Fundamentals of Ultrasonography: “Knobology” and Image Generation**
Anthony J. Dean, M.D., F.A.A.E.M., F.A.C.E.P.
- 9 a.m. **Hands-on: Knobology and Machine Basics**
All Faculty
- 9:30 a.m. **Introduction to FAST/FAFF**
Alyssa Abo, M.D.
- 10 a.m. **Vascular Access: Peripheral, Central and Arterial Line Placement**
Ronald F. Marchese, M.D., Christie Glau, M.D.
- 10:30 a.m. **Break**
- 10:45 a.m. **Hands-on Skills: (FAST/FAFF/Vascular Access)**
All Faculty
- 12:15 p.m. **Lunch — Ultrasound Cases and Discussion**
Aaron Chen, M.D., F.A.C.E.P.; Akira Nishisaki, M.D., M.S.C.E., F.A.A.P.
- 1 p.m. **Fluid and Cardiac Function (Normal)**
Maria Fraga, M.D.
- 1:30 p.m. **Shock/Hypotension**
Nova Panebianco, M.D., M.P.H.
- 2 p.m. **Break**
- 2:15 p.m. **U.S. Artifacts and Lung: Pneumonia, Pneumothorax, Pleural Effusions**
Adam Himebauch, M.D.
- 2:45 p.m. **Hands-on Skills (Lung, Cardiac Stations)**
All Faculty
- 4:30 p.m. **Adjourn**



Program • Sunday, May 31, 2015

- 7:15 a.m. **Continental Breakfast**
- 7:45 a.m. **Welcome and Day Two Overview**
- 8 a.m. **Brief Review**
- 8:10 a.m. **Basic Procedures: Abscess, Foreign Body, Bladder, Spinal Tap**
Aaron Chen, M.D., F.A.C.E.P.
- 8:45 a.m. **Advanced Pulmonary Examination**
Jim Tsung, M.D., M.P.H.
- 9:15 a.m. **Break**
- 9:30 a.m. **Abdominal Ultrasonography in Pediatric Emergency Medicine**
Kate Deanehan, M.D., R.D.M.S.
- Advanced Ultrasound Guided Procedures for PCCM (Pitfalls and Complications)**
Akira Nishisaki, M.D., M.S.C.E., F.A.A.P.
- 10 a.m. **Musculoskeletal Applications in Pediatric Ultrasound for Emergency Medicine**
Nancy Chauvin, M.D.
- Advanced Cardiac Ultrasound for PCCM**
Erik Su, M.D.
- 10:30 a.m. **Hands-on Skills: Abscess, IV, Shock , Advanced Stations**
All Faculty
- 12:15 p.m. **Working Lunch — Ultrasound Cases/Image Review**
Aaron Chen, M.D., F.A.C.E.P.; Thomas Conlon, M.D.
- 1 p.m. **Point-of-care Ultrasound Education**
David Kessler, M.D., M.Sc., R.D.M.S.
- 1:30 p.m. **Knowledge Assessment: Critical Review of US Scans**
Aaron Chen, M.D., F.A.C.E.P.; Akira Nishisaki, M.D., M.S.C.E., F.A.A.P.
- 2:15 p.m. **Break**
- 2:30 p.m. **Skill Assessment CCM: Cardiac, Lung, IVC Assessment, Procedural, EM, FAST, IV, Bladder, FB, Cardiac/Lung**
All Faculty
- 4:30 p.m. **Questions and Answers**
- Course Evaluation*
Optional — General Discussion:
Administrative, Political and
Educational Issues
- 5 p.m. **Adjourn**



Course Faculty

Unless otherwise noted, faculty is from The Children's Hospital of Philadelphia and the Perelman School of Medicine at the University of Pennsylvania

Course Directors

Aaron Chen, M.D., FA.C.E.P.

*Director of Emergency Ultrasound
Division of Emergency Medicine
Associate Professor of Clinical Pediatrics*

Thomas Conlon, M.D.

*Attending Physician
Department of Anesthesiology and Critical Care Medicine*

Akira Nishisaki, M.D., M.S.C.E., FA.A.P.

*Associate Medical Director for Clinical Implementation Programs
Department of Anesthesiology and Critical Care Medicine*

Course Faculty

Alyssa Abo, M.D.

*Associate Director of Emergency Ultrasound
Division of Emergency Medicine
Children's National Medical Center
Assistant Professor of Pediatrics and Emergency Medicine
George Washington University School of Medicine*

Nancy Chauvin, M.D.

*Attending Radiologist, Department of Radiology
Assistant Professor of Radiology and Surgery*

Lei Chen, M.D., M.H.S.

*Director of Research, Section of Emergency Medicine
Department of Pediatrics
Yale-New Haven Hospital
Associate Professor of Pediatrics
Yale University School of Medicine*

Alfred Cheng, M.D., M.S.C.E.

*Associate Director of Emergency Ultrasound
Attending Physician
Cooper University Healthcare*

Kassa Darge, M.D., Ph.D.

*Chief, Division of Body Imaging
Department of Radiology
Professor of Radiology and Surgery*

Anthony J. Dean, M.D., FA.A.E.M., FA.C.E.P.

*Director, Division of Emergency Ultrasonography
Department of Emergency Medicine
Hospital of the University of Pennsylvania
Associate Professor of Emergency Medicine and
Associate Professor of Emergency Medicine in Radiology*

J. Kate Deanehan, M.D., R.D.M.S.

*Assistant Professor
Pediatric Emergency Medicine
Johns Hopkins Children's Center*

Maria Fraga, M.D.

*Attending Physician
Division of Neonatology
Associate Professor of Clinical Pediatrics*

Christie Glau, M.D.

*Clinical Fellow
Department of Anesthesiology and Critical Care Medicine*

Adam Himebauch, M.D.

*Attending Physician
Department of Anesthesiology and Critical Care Medicine
Assistant Professor
Department of Anesthesiology and Critical Care Medicine*

David Kessler, M.D., M.Sc., R.D.M.S.

*Director of Pediatric Emergency Ultrasound and
Clinical Simulation
Division of Pediatric Emergency Medicine
New York Presbyterian Morgan Stanley Children's Hospital
of New York
Assistant Professor of Pediatrics
Columbia University College of Physicians and Surgeons
Research Director for the INSPIRE network*

Ronald F. Marchese, M.D.

*Attending Physician
Division of Emergency Medicine
Assistant Professor of Clinical Pediatrics*

Nova Panebianco, M.D., M.P.H.

*Attending Physician
Department of Emergency Medicine
Associate Director of Emergency Ultrasound
Hospital of the University of Pennsylvania
Assistant Professor of Emergency Medicine*

Erik Su, M.D.

*Director of Pediatric ICU Ultrasound Program
Johns Hopkins Children's Center
Assistant Professor
Department of Anesthesia and Critical Care Medicine
Johns Hopkins University*

Jim Tsung, M.D., M.P.H.

*Director of Pediatric Emergency Ultrasound
Mount Sinai Hospital
Associate Professor of Emergency Medicine and Pediatrics
Icahn School of Medicine at Mount Sinai*

Registration

Please note: Session limited to 40 registrants.

Pediatric Emergency Medicine and Critical Care Medicine: Bedside Ultrasound Course

Saturday and Sunday, May 30 – 31, 2015 – Registration Deadline: Friday, May 15, 2015

*Name _____

*Credentials _____

Institution/Hospital _____

*Home Address _____

City _____ State _____ ZIP _____

Phone _____ Fax _____

*Email _____

*Discipline: Emergency Medicine Critical Care Medicine Other _____

** Required Field*

Prior Point-of-care Ultrasound Experience

None

Limited, mostly for line placement

Limited, but use it for multiple diagnostic and procedural indications

Moderately experienced in multiple diagnostic and procedural indications

Conference Registration Fee: \$900

Method of Payment

Personal check Institutional check

(Please make check payable to The Children's Hospital of Philadelphia.)

Discover MasterCard American Express VISA

Credit Card # _____

Exp. Date _____

Registration will not be processed unless accompanied by full payment.

Faxed registrations will be accepted for credit card payments only.

Mail/fax the completed registration form and payment to:

Ms. Micah Holliday, Continuing Medical Education Department

The Children's Hospital of Philadelphia

34th Street and Civic Center Boulevard

Philadelphia, PA 19104-4399

215-590-5CME • Fax 215-590-4342 • hollidaydm@email.chop.edu

Register online at www.chop.edu/cme